



SEDAN UPDATE

One Team One Outcome



www.speedwaysedans.com

October 2019

2019/20 Season National Titles

Junior Sedans – Collie Speedway WA
Friday/Saturday/Sunday – 10/11/12 January 2020

Street Stocks – Latrobe Speedway TAS
Thursday/Friday/Saturday – 9/10/11 April 2020

Super Sedans – Borderline Speedway SA
Friday/Saturday/Sunday – 6/7/8 March 2020

Modified Sedans – Carrick Speedway TAS
Thursday/Friday/Saturday – 19/20/21 March 2020

Production Sedans – Ellenbrook Speedway WA
Friday/Saturday/Sunday – 24/25/26 April 2020

All technical items mentioned in this newsletter can be found in the current updated Specification Books and Class Technical Manual as uploaded to [Click Here](#)

ALL DIVISIONS

All Window Nets must be dated.

- Window nets with SFI rating that have manufacture dates be replaced every two years.
- Window nets with SFI rating that have an expiry date be enforced immediately.
- As from the 01/07/2023 all SFI rated window nets with an expiry/end date will be mandatory.
- FIA 8863-2013 window nets are acceptable and must meet the FIA standards/requirements that being a maximum usable life of five years from date of manufacture.



SFI Labels Prior to 2017



SFI Labels Available
Jan. 1, 2017

ALL MONO DIVISIONS

Class Technical Manual Section 17 – Seat

- e) Seats include Kirkey, Butler, Ultra Shield, United Speedway Accessories, Bratpac and Racetech.

- j) As a minimum the seat shall support the drivers back to the top and full width of the shoulders. Seat back is to be braced and attached to the roll cage approx. 75mm below shoulder height using a minimum of 2 x 8mm bolts with 40mm minimum body washers.
- o) The seat base is to be mounted to roll cage seat base frame using a minimum of 2 x 8mm bolts and 40mm minimum body washers. Base of seat is defined as the lower part of the seat. Lower seat sides or seat base can be used for mounting purposes.
 - Flat steel body washers are permitted
 - Aluminium tapered seat body washers are permitted (see Fig 5)
 - Proprietary seat manufacturer mounting kits are permitted.
 - Plastic / nylon tapered seat body washers are NOT permitted



MONO DIVISIONS – exception National 4's

For purposes of maintaining 100mm clearance of any bracing from rear of bumper tubes; rear of bumper tubes are determined as the inner side of the tubes of both front and rear bumpers.

ALL MONO DIVISIONS – as applicable

For all cars that do not have an OEM firewall to separate the fuel tank from the driver – the fuel tank must be fully enclosed – this includes the base as well as the sides and top.

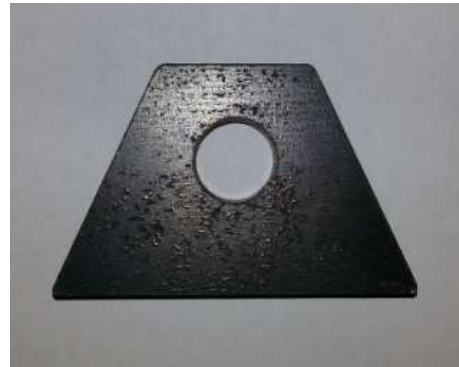
ALL DIVISIONS - CDS ROLL CAGE MATERIAL UPDATE

Centre Windscreen Bar #11 and Foot Protection Bar Support Bar #14 to be 25mm x 2.6mm CDS.

SUPER SEDANS

For all **new** Super Sedans registered post 1 July 2020 – seat belt tabs shall be as follows:

- Seat belt mounting tabs to be one of the following options:
- Option 1 – if one flat piece is being used must be minimum 50x50mm x 3mm minimum thickness and fully welded on both sides
- Option 2 – 40x40xmm x 3mm minimum thickness also acceptable if RHS is used making tab 3 sided. Sides to be minimum 20mm.
- Option 3 – Bent tabs also acceptable 40x40mm x 3mm minimum thickness with 20mm long angles minimum.
- Option 4 – If one flat trapezoid tag is used; must be as per diagram – measurements to be minimum 55x35x25mm x 5mm. To be welded on both sides of the longest side.
- Option 5 – If using ‘wrap around’ method of mounting seat belts they MUST be mounted so that the belt cannot slide along the mounting bar.



SUPER SEDANS

Rear Quarter Panels – Page 24 c) – now reads
The measurement in the attached table refers to the measurement from the top of the deck panel to the lowest point of the rear quarter panel at a point directly behind the rear wheel, this measurement is a maximum of 720mm.

If using option 2 or 3 the tags, must be welded on one side of the entire bracket assembly, as per attached photo.

No holes for lightening or dual mounts for belts.

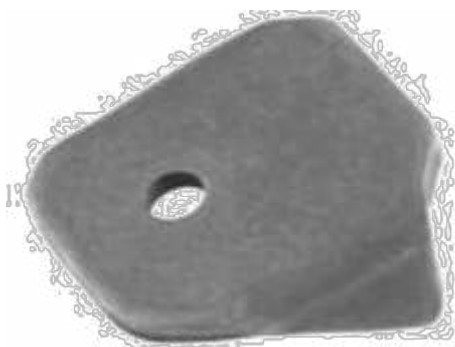


SUPER SEDANS

CT525 Engine – update of new part #
LSX Ignition controller P/N 19171130, GM LS Circle Track Ignition Controller 19355863 or MSD 60144CT.
The ignition controller shall be fitted with a data inspection port.

SUPER SEDANS

- Wording Update – Page 22 Items a) b) n)
- Section 22 – Body Shape, Dimensions & Body Fitment
- Body is to be a complete symmetrical outer shell and comply with the Super Sedan body measurements below.
 - It must be fitted so that the centreline of the complete body is symmetrical and is within 25mm of the centreline of chassis along the complete body centreline.
 - The complete body shall be fitted in such a manner that it shall not be raked in any form and that the complete body is attached parallel with the chassis. Attachment of front or rear body panels will be symmetrical to the rest of the complete body.





SEDAN UPDATE

www.speedwaysedans.com

One Team One Outcome

October 2019

SUPER SEDANS

Wording Update – Section 18 – Definitions - Page 12

BLADE

- a) The blade refers to the flat leading surface of a wing. Maximum blade length (as measured from top to bottom of blade) is 400mm. Maximum width of blade (side to side) shall be 1550mm. Maximum height will be 180mm.

Wording Update – Section 22 – Body Shape - Page 26

REAR SPOILERS

- b) The spoiler may be a single plane type attached directly to the rear deck or dual plane type mounted on supports above rear deck.
- c) The spoiler blade is the flat leading surface of the wing

Wording Update – Section 22 – Body Shape - Page 26

1) SINGLE PLANE

- a) Leading and trailing faces of single plane spoiler shall be a maximum of 180mm in height.
- d) All spoiler supports shall comply with dimensions specified in figure 8.

MODIFIED SEDANS

Page 15 – Engine – Section 4.2 Item a)

Clarification on the wording for Carburettor

Configuration. [Click Here](#)

MODIFIED SEDANS

Updated Information for Section 18 – Tables

Table 3 – Throttle Body

Mazda RX7 – Series 1 to 3 – Wankel 13B

3 x 45mm ID Butterfly Section

Table 4 - Dimensions

Mazda RX7 - Series 1 to 3

Wheelbase – 2420mm

Front Track – 1620mm (including allowances)

Rear Track – 1600mm (including allowances)

PRODUCTION SEDANS

Acceptance of the introduction of Daihatsu G100

Charade

Daihatsu Charade G100 1987 – 1993

Engine – CB 993cc 3 Cylinder

Bore - 76mm Stroke - 73mm

OEM Carburettor – Twin Barrel Downdraught

Wheel Base – 2340mm

Front Track – 1900mm (including allowances)

Rear Track – 1785mm (including allowances)

STREET STOCKS

The use of a Ford Falcon FGX will be permitted for use effective from 20th October 2019.

NATIONAL 4's

Refer to Page 2 – Introduction Section

Refer to Page 3 Section 1 Item d)

FWD to RWD conversion – by application only

It is permitted to convert a Front Wheel Drive (FWD) vehicle manufactured after 01.01.92 to a Rear Wheel Drive (RWD) vehicle only submission to the CTAC and subsequent approval by SSA Technical. The approval process to remain until further notice. [Click Here](#)

NATIONAL 4'S

Acceptance of the introduction of the Honda Accord Honda Accord 1994

Engine – F22

Wheelbase – 2715mm

Front Track – 1790mm (including allowances)

Rear Track – 1775mm (including allowances)

JUNIOR SEDANS

Section 1 Body/Rolling Shell – Page 4 – Item e)

All cars that have a welded in/non removable Dash bar - Dash bar must remain in place. E.g. Excel's and Lancers.

JUNIOR SEDANS

Acceptance of the introduction of the Mitsubishi Mirage Mitsubishi Mirage 1996-2001

Engine – 1.5 litre – 4G15 SOHC

Valve Sizes – Intake 26 & 31mm Exhaust 33mm

Bore – 75.5mm Stroke – 82mm

OEM Wheel Track Front 1450mm Rear 1460mm

Injector No – CDH166

Throttle Body – Butterfly ID – 46mm

JUNIOR SEDANS

Fuel tank clearance to be 300mm minimum from outer side of car.



SEDAN UPDATE



www.speedwaysedans.com

One Team One Outcome

October 2019

Contact your State Divisions CTAC Representative or your State Technical Representative for further information.

CONTACT LIST – a live copy can be found on the SSA website in each Class Technical page

STATE TECHNICAL REPRESENTATIVES

VIC – Colin Campton – 0409 176 154
QLD – Doug Rigby – 0413 649 889
TAS – Jake Taurian – 0427 764 888
WA – Fab Martinelli – 0409 998 323
NSW – Doc Bailey – 0422 307 881
SA – Adrian Wright – 0434 868 370
NT – Ian Menzies – 0467 055 106

CTAC Chairpersons & State Reps

Street Stocks – Colin Campton – 0409 691 544
wavexh@bigpond.net.au

VIC – Wayne Sheerman – 0409 176 154
TAS – Todd Auton – 0438 646 894
SA – Paul Razum – 0400 673 767
NT – Ian Menzies – 0467 055 106
WA – Matt Amato – 0438 140 879
WA - Hayden Norman – 0448 085 885
NSW – John Lodge – 0413 180 953
QLD – Doug Rigby – Acting - 0413 689 889

Production Sedans – Benny Taylor – 0400 559 125
btr915@hotmail.com

SA – Jonathon Oliver – 0407 418 801
NSW – Mitch Coulson – 0405 028 124
QLD – Allan Jennings – 0427 737 174
VIC – Stephen Laidlaw – 0409 223 206
WA – Paul Bennett – 0413 009 664
WA – Frank Does – 0412 771 595

Modified Sedans – Peter Theyer – 0418 941 269
theyerpeter@yahoo.com.au

VIC – Grant Bird – 0417 108 509
VIC – Greg Atkins – 0408 577 161
NSW - Trent Dhu – 0439 981 674
TAS - Scott Piper – 0472 525 771
QLD – Gary Pagel – 0418 887 579
WA – Peter Fraser – 0419 049 411
WA – Adam Houston – 0409 414 398
SA – Darren Allen – 0427 005 894

National 4's – David Weir – 0427 943 329

david@weirfamily.id.au

NSW – Trent Dhu – 0439 981 674

QLD – Bret Hancock – 0412 935 600

Super Sedans – Acting – Benny Taylor – 0400 559 125

btr915@hotmail.com

VIC – Mick Nicola Snr – 0418 514 444

NSW – Paul Kranitis – 0417 042 379

SA – Peter Lowe – 0417 802 380

WA – Tristan Green – 0411 332 821

TAS – Brett Davidson – 0408 649 889

QLD – Doug Rigby – Acting - 0413 649 889

Junior Sedans are under the guidance of the SSA Technical Committee – please contact your State Technical Rep for further assistance.

SPEEDWAY SEDANS AUSTRALIA CONTACT DETAILS

National Office – office@speedwaysedans.com

Technical Admin – technical@speedwaysedans.com

Postal – P.O. Box 163, HOLDEN HILL SA 5088



One Team One Outcome